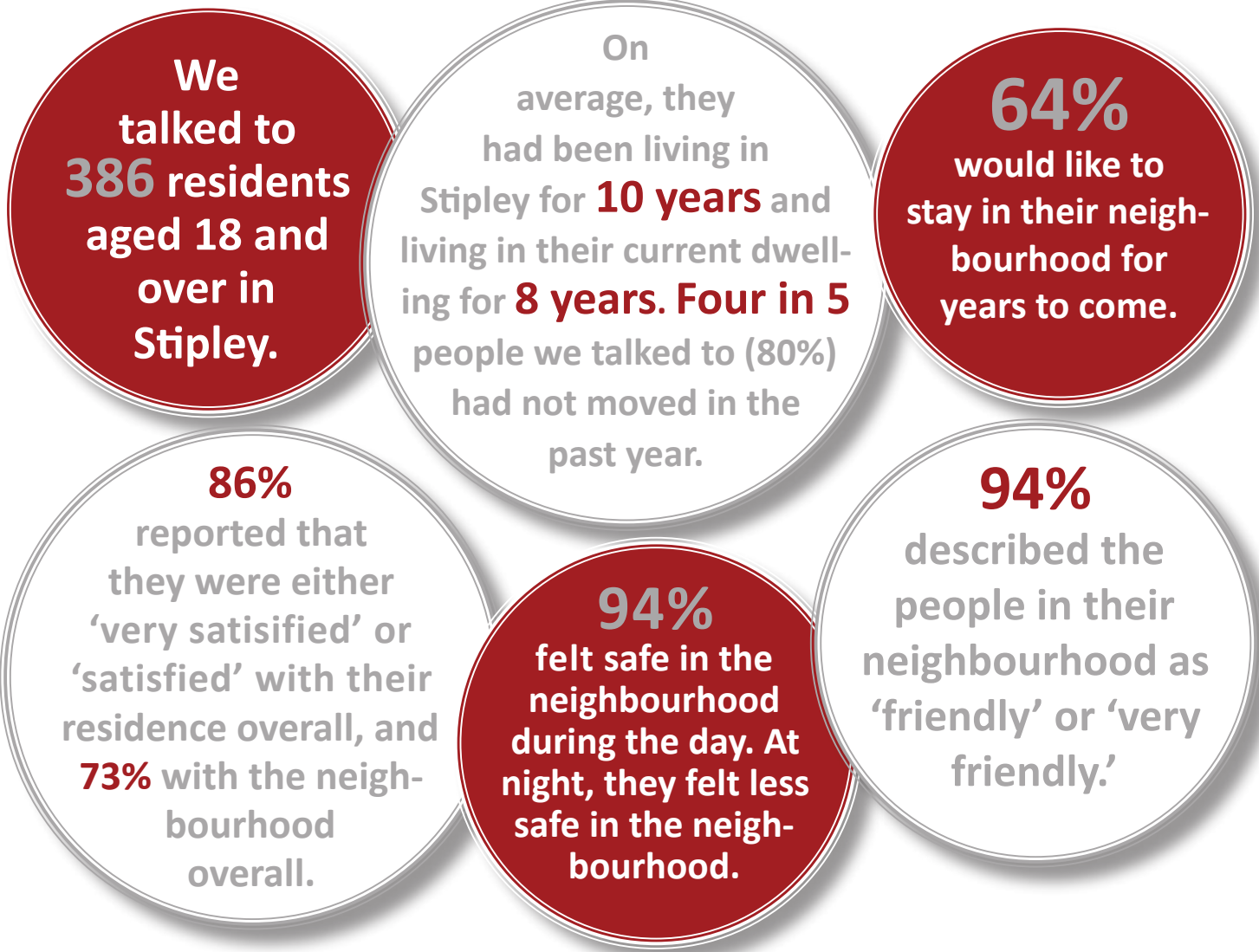


As part of a McMaster research study, we did surveys with residents in Keith, Stinson and StipleY neighbourhoods. Here are some highlights from StipleY. You can download a full report at www.crunch.mcmaster.ca/projects/hnstudy.

ABOUT THE STUDY

Our research team at McMaster is doing the Hamilton Neighbourhoods Study to help find out what kind of difference the City of Hamilton's Neighbourhood Action Strategy is making in your neighbourhood. In 2012, we interviewed residents in StipleY, the neighbourhood surrounding the stadium, stretching from Sherman to Gage and Main to the CN tracks. Participants were selected at random.



Around **1 in 4** people felt that places to buy healthy food, meet people and have a meeting were lacking. Around **2 in 5** people felt that childcare, public libraries and places to be physically active were lacking.

About **half** felt that services for youth, banks, and family doctors/walk-in clinics were lacking. About **1 in 12** felt that those services were inaccessible.

Most people agreed the neighbourhood has ways of sharing information and opportunities for celebration and fun.

But they weren't convinced the neighbourhood has ways of working together to solve problems, or that they have influence over what their neighbourhood is like.

People we surveyed were asked: "What do you think are the **TWO** most important things that would make your neighbourhood a better place to live?" Here's what we heard most often, with the number of responses in brackets.

- 1 Address issues related to sex work (59)
- 2 Drug dealing and use (58)
- 3 Greater police presence needed (42)
- 4 Traffic calming measures needed e.g. stop signs and traffic lights (31)
- 5 Community/recreation centre needed (30)

GET INVOLVED WITH STIPLEY!

Your neighbours have been working on these issues and priorities. If you'd like to find out more or get involved in neighbourhood action in Stiple, contact:

David Derbyshire, Community Development Worker
david.derbyshire@wesleyurbanministries.ca
905-975-0980

Sherman Hub Community Planning Team
Meets the 1st Monday of every month from 7 p.m. to 9 p.m. at St. Giles Church, 85 Holton Ave., Hamilton

To get more information on the Neighbourhood Action Strategy and the South Sherman Neighbourhood Action Plan, visit www.hamilton.ca/neighbourhoods

HOW CAN I LEARN MORE?

Dr. Jim Dunn and his staff at McMaster University are doing the research study this report is based on. If you have any questions, call the study hotline or email us.



905-525-9140 ext. 23375



hnstudy@mcmaster.ca

This research was funded in part by the Ontario Ministry of Health and Long-Term Care. The views expressed are those of the researchers, not the Government of Ontario, or the Ministry of Health and Long-Term Care.